

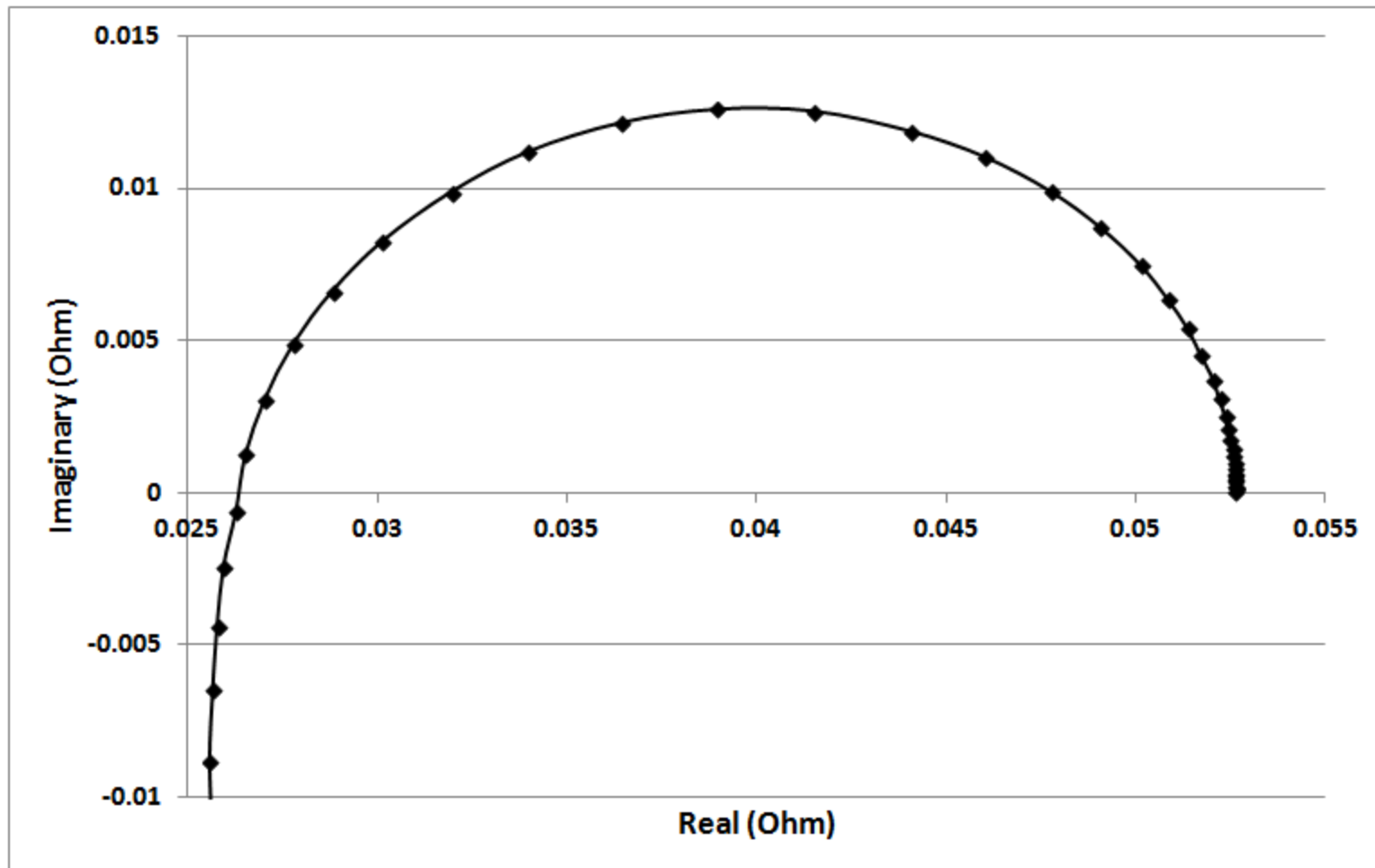
Electrochemical impedance spectroscopy on a Randles cell and commercial batteries

Bogdan Gurau
NuVant Systems Inc.

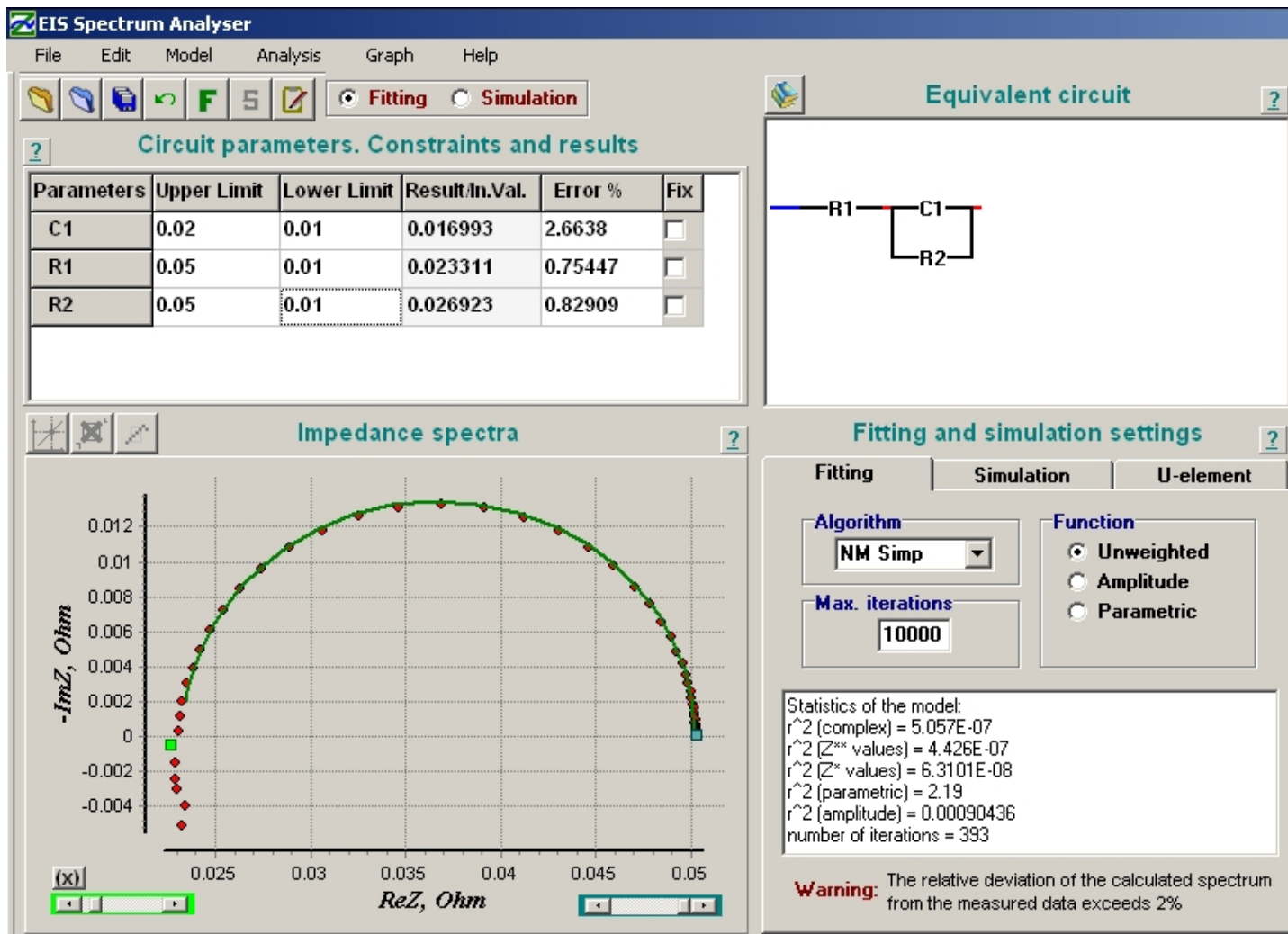
EIS on the EZstat Pro

- All tests were performed from 10 kHz to 10 mHz
- All tests were performed with a 10 mV amplitude AC perturbation
- An example of fitting the EIS data is shown on slide 3. The fitting is performed for the Randles circuit using EIS Spectrum Analyzer (a freeware) which can be downloaded at: <http://www.abc.chemistry.bsu.by/vi/analyser/>
- NuVant potentiostat/ galvanostat instruments are unique because they do not use switching supplies. NuVant electrochemical instruments use transformers to substantially reduce noise and obviate the need for filters. Thus NuVant systems are ideal for low noise applications such as AFM etc. End-user may use external filters if desired.

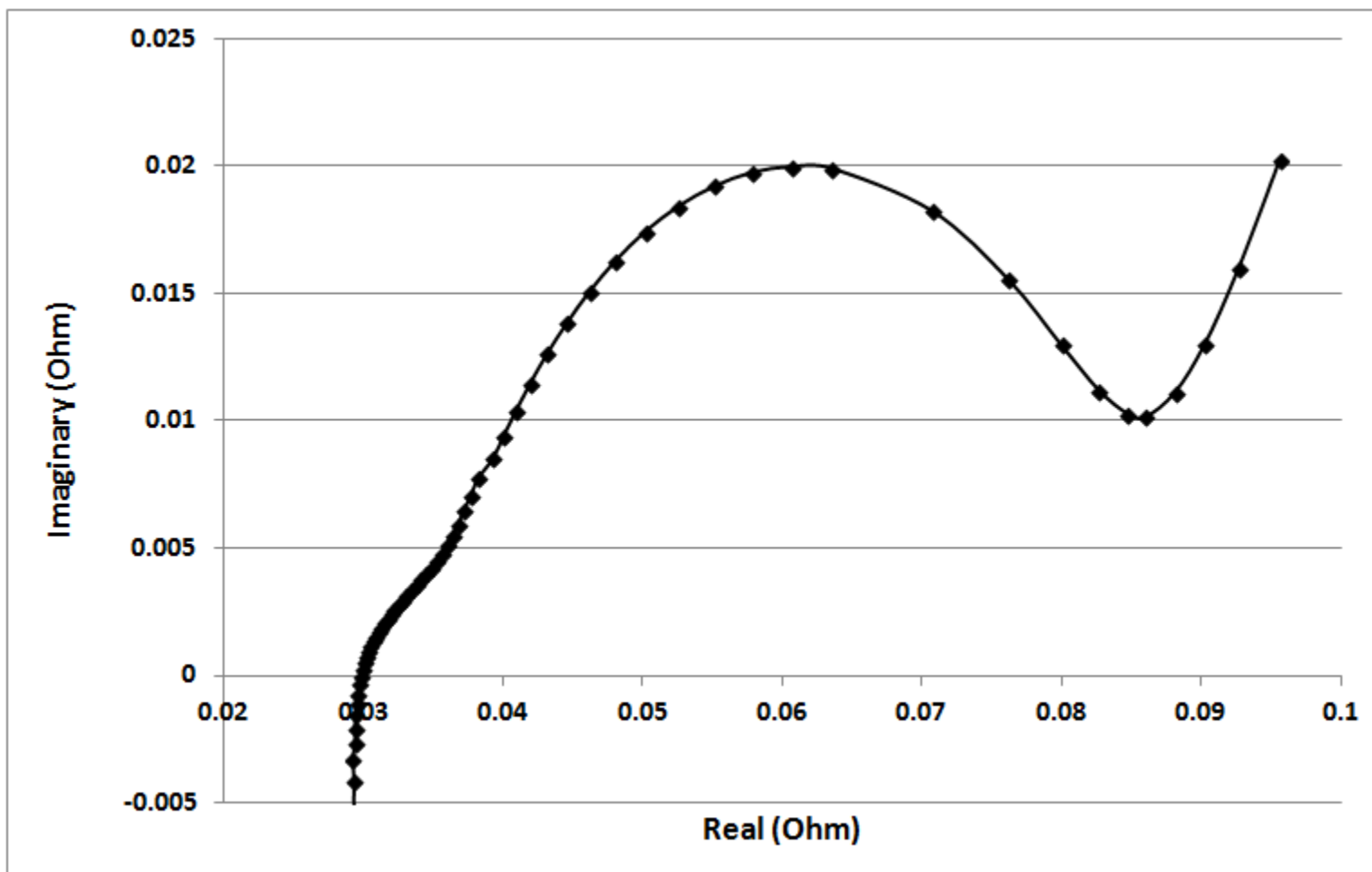
Randles Circuit



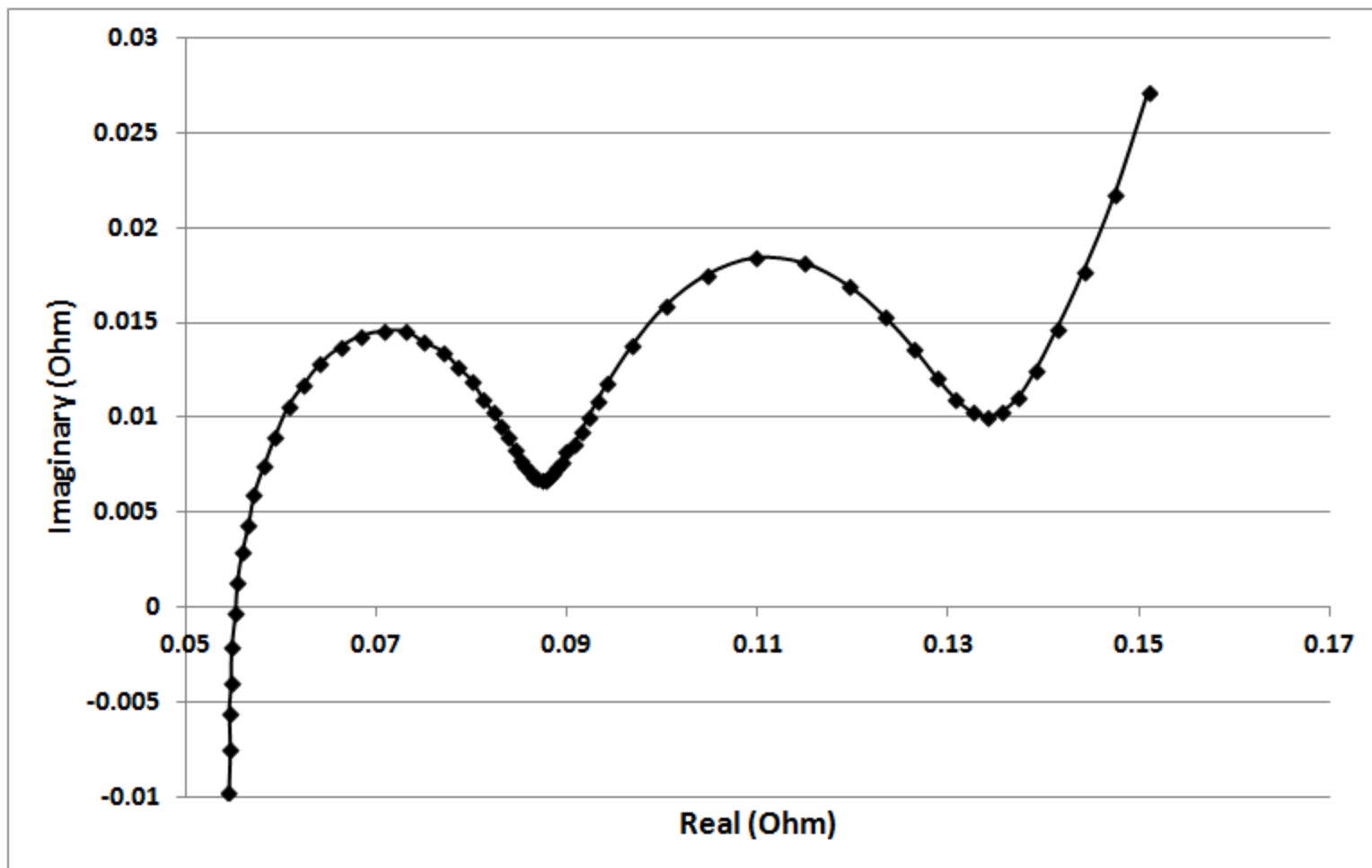
Randles Circuit



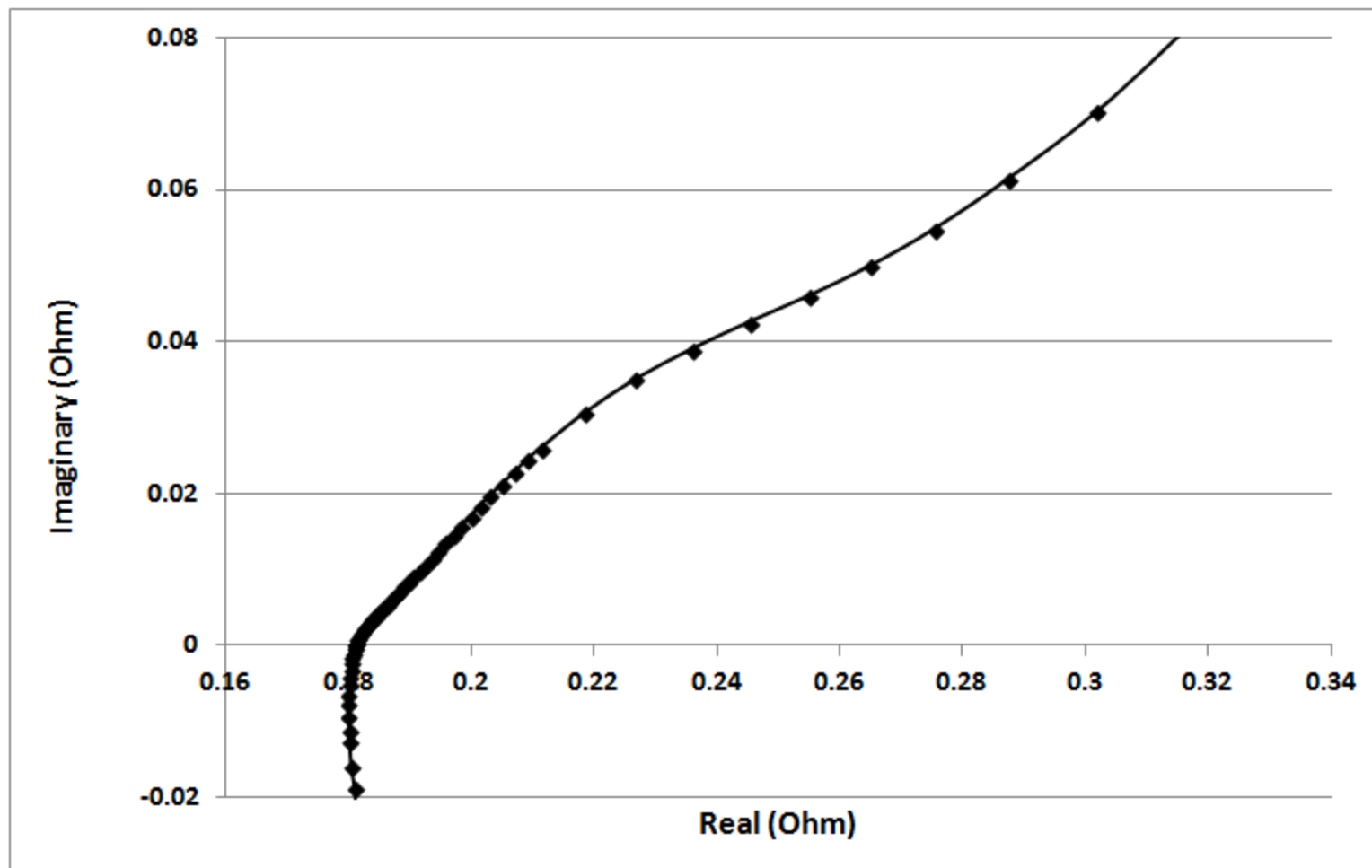
1.2V AAA 700 mAh Energizer NiMH Battery



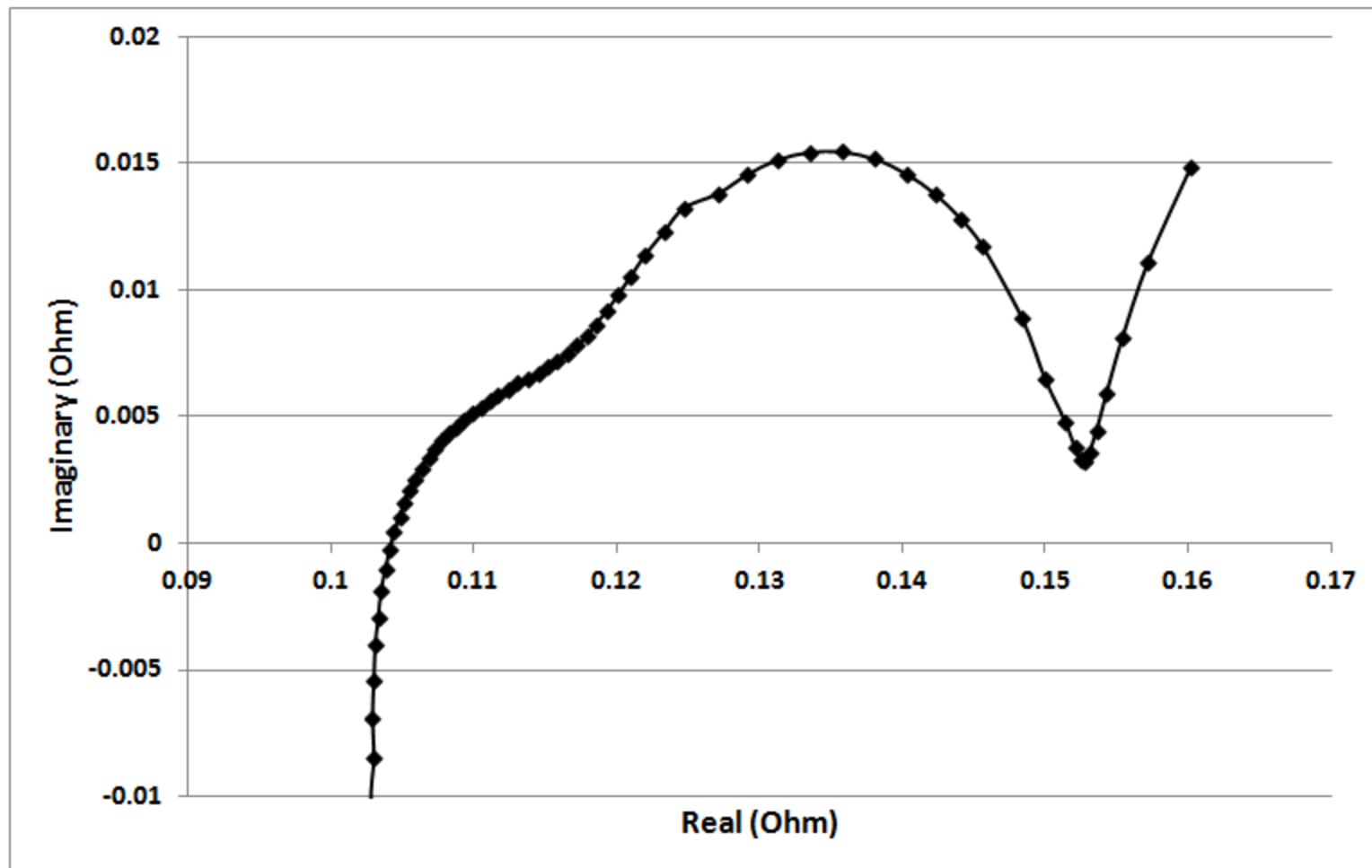
1.2V AAA 700 mAh Energizer NiMH Battery + Randles Circuit



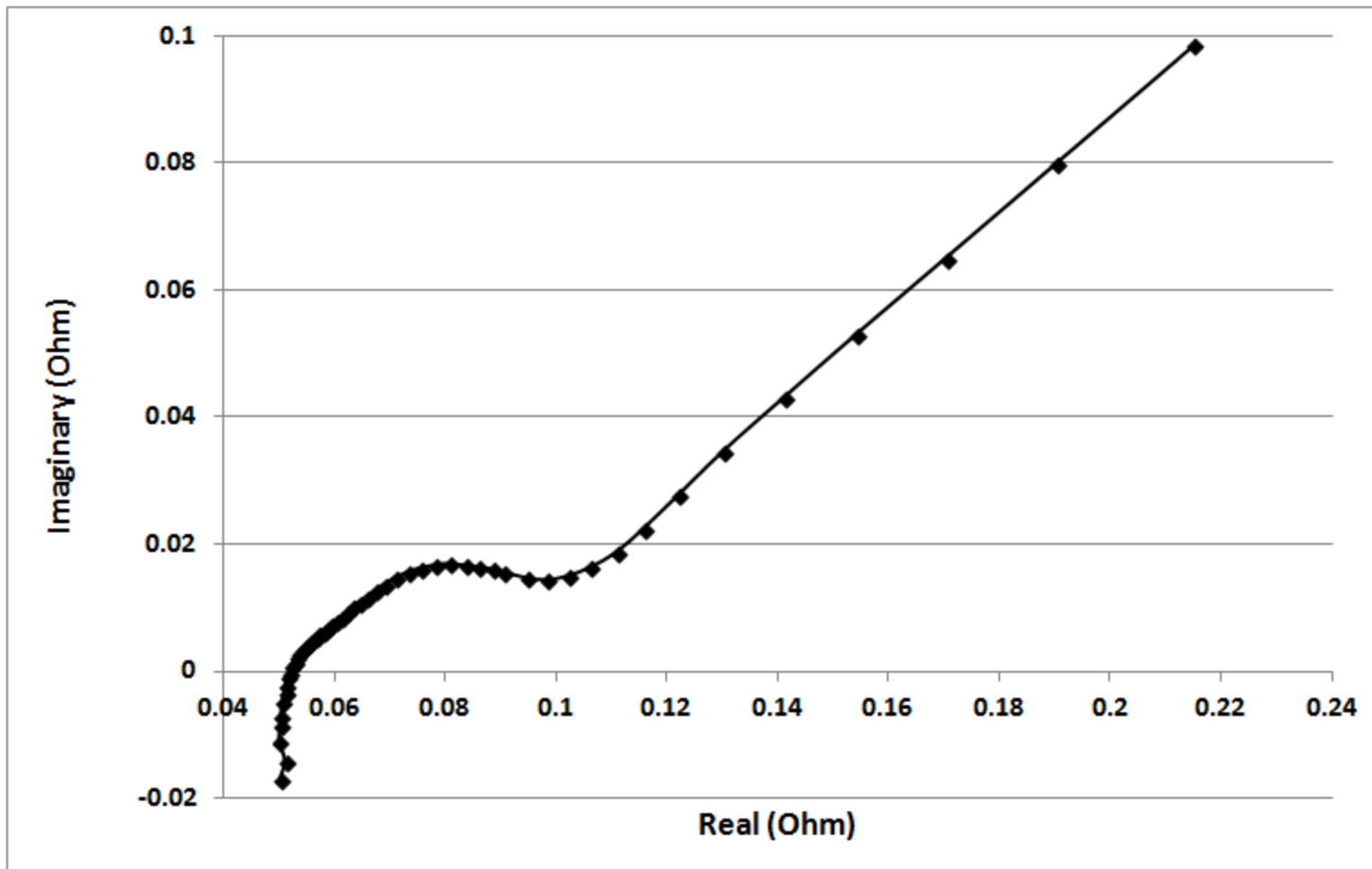
1.2V AA 850 mAh Everwin Technology NiCd Battery



Samsung 3.8V 9.88Whr Li-ion Battery



Panasonic 6V 4500 mAhr Lead-Acid Battery



7.8V Toyota Electric Vehicle NiMH Battery

